

Our Mission Statement

At St. Bernadette's Catholic School, you will find us caring, hardworking and co-operative. We follow the ways of Jesus using our talents and gifts to make our school special. We show respect to all and welcome you.



Year 6 Parents' Meeting

September 2023



Year 6 Staff

- Miss Boron (6ZB)
- Mrs Canning (6LC)
- Mrs Harston (6KH)
- Miss Hulse (English)
- Mr Carroll (Maths)
- Mrs Kerrigan (Support Assistant)
- Subject Specialist Teachers
- Year 6 Governor: Mrs Winters



Due to dates being subject to change, please refer to the school website and newsletters for all updates.

www.stberns.co.uk

SEPTEMBER 2023	
Monday 18	Inset Day
Thursday 21	Year 6 – Eco Park
Wednesday 27	9:00am – Year 6 Inscription Mass (school – parents invited)

OCTOBER 2023	
Wednesday 4	9:30am Whole School Harvest Mass (Church)
Monday 9	Year 6 - Alton Castle Residential Trip
Tuesday 10	Year 6 - Alton Castle Residential Trip
Wednesday 11	Year 6 - Alton Castle Residential Trip
Friday 13	Year 6 - Reading Open Morning
Monday 23	International Week
Monday 30 October – Friday 3 November 2023	HALF TERM WEEK

Subject to change.

NOVEMBER 2023	
Monday 6	Inset Day
Wednesday 8	2:15pm – Year 6 Confirmation Meeting
Friday 10	Remembrance Assembly 1.30pm Year 6 parents meeting regarding FGM & CSE
Monday 13	Anti-Bullying Week
Tuesday 14	Family photos today
Wednesday 15	9:30am - KS2 Mass (Church)
Thursday 23	1:00pm – Year 6 Confessions (in preparation for Confirmation)
Tuesday 28	Parents Evening (English)
Wednesday 29	Parents Evening (English)
Thursday 30	St Andrew's Day (50p - all to wear blue or white)

Subject to change.

DECEMBER 2023	
Sunday 3	First Sunday of Advent
Monday 4	9:00am - Advent Service in school Immunisation for Reception-Year 6
Friday 8	Christmas Jumper Day
Wednesday 13	Children's Christmas Dinner
Monday 18	Gold star own clothes day
Tuesday 19	Year 5 and 6 carol concert
Wednesday 20	9:30am - Whole School Mass (Church)
Thursday 21	Christmas party afternoon
Friday 22	Finish for Christmas Toy day 100% attenders own clothes

Subject to change.

Attendance and Punctuality

- 95% - 100% is acceptable (illness)
- Phone call to the office on first day of absence, followed up with letter on return to school.
- If a medical appointment has to be in school time, please forward letter / slip to school.
- Prompt arrival at school is essential to ensure your child's attendance record is not adversely affected.
- Doors open at 8.30am and children must be in class by 8.45am at the latest.



When does my child have homework?

- **ALL** children will be given homework each week on Seesaw.
- English is given out on a Tuesday and must be submitted by Friday.
- Maths is given on a Friday and must be submitted by Tuesday.
- Homework that is submitted late will not be marked.
- Weekly spellings will be set on Spelling Shed.
- Please encourage use of Times Tables Rockstars on a regular basis.



Reading Homework

- We use the Accelerated Reader programme. Children will take an online reading test at least three times a year. The results of this test give children a ZPD, which is basically a range from which to choose books from.
- Children can then borrow books from our school library, within their ZPD.
- Once they have read their book, they take an online quiz. If they pass this quiz, extra points are assigned to their accounts. Their 'word count' also increases. These quizzes can be taken at home.
- Communication Diaries must be signed to say you have heard them read at home.



How can you support?

- Read every day with your child for **at least 15 minutes a day** – essential for all pupils, regardless of ability.
- Encourage your child to read a wide range of reading material - fiction, non-fiction, poetry, newspapers and magazines.
- Use our Top 20 or Book of the Month suggestions to help explore a wider range of authors and genres.
- Talk to your child about what they are reading.
- Create a Toppsta profile and enter giveaways to win new books for your child to review – encourage them to share their opinions about what they have read.
- Take them to the library.



Communication Diary

- Each child has a communications diary, which must be signed at least three times a week.
- Children who have their diary signed at least three times per week will be entered into a termly prize draw.
- Teachers will check diaries weekly.
- If a child does not have their diary in school, they will not be able to receive their reading star for that week. Children must collect at least ten stars to enter the prize draw.



Times Tables Tribe

This year, pupils will continue to work towards achieving their Times Tables Tribe badges.

Each Friday, children from years 2 – 6 will be tested on one of the times tables. The tables are grouped and will be tested in the following order:

Bedazzling Bronze – x2, x10, x5

Sublime Silver – x3, x4, x8

Glorious Gold – x6, x7, x9, x11, x12

Once pupils have successfully completed their focus times table, they will be tested on the next table in the category the following week. At the end of each half term, if your child has passed all of the times tables in their category, they will be awarded the relevant badge in an assembly. Each child will have the opportunity to earn all 3 badges over time at a pace appropriate for them.

Each pupil will continue from the table that they passed most recently in the previous academic year.



National Curriculum Tests (SATs)

Currently scheduled nationally to take place in the week beginning 13th May 2024

English

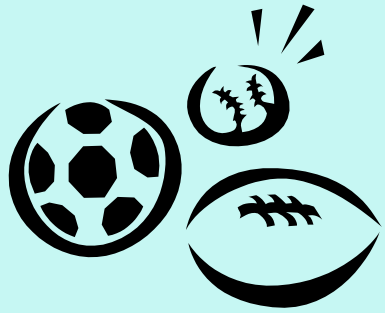
- Reading comprehension test
- Grammar, punctuation and spelling test (2 papers)
- Writing to be teacher assessed

Mathematics

- 1 arithmetic test
- 2 written reasoning papers



PE



- PE kits should be kept in school at all times.
- Kit consists of black pumps, black shorts and a white t-shirt.
- In the winter, pupils are allowed plain tracksuits for outdoor sports.
- Indoor kit must still be kept in school during winter months, children are not expected to wear tracksuits inside.



Behaviour Stars

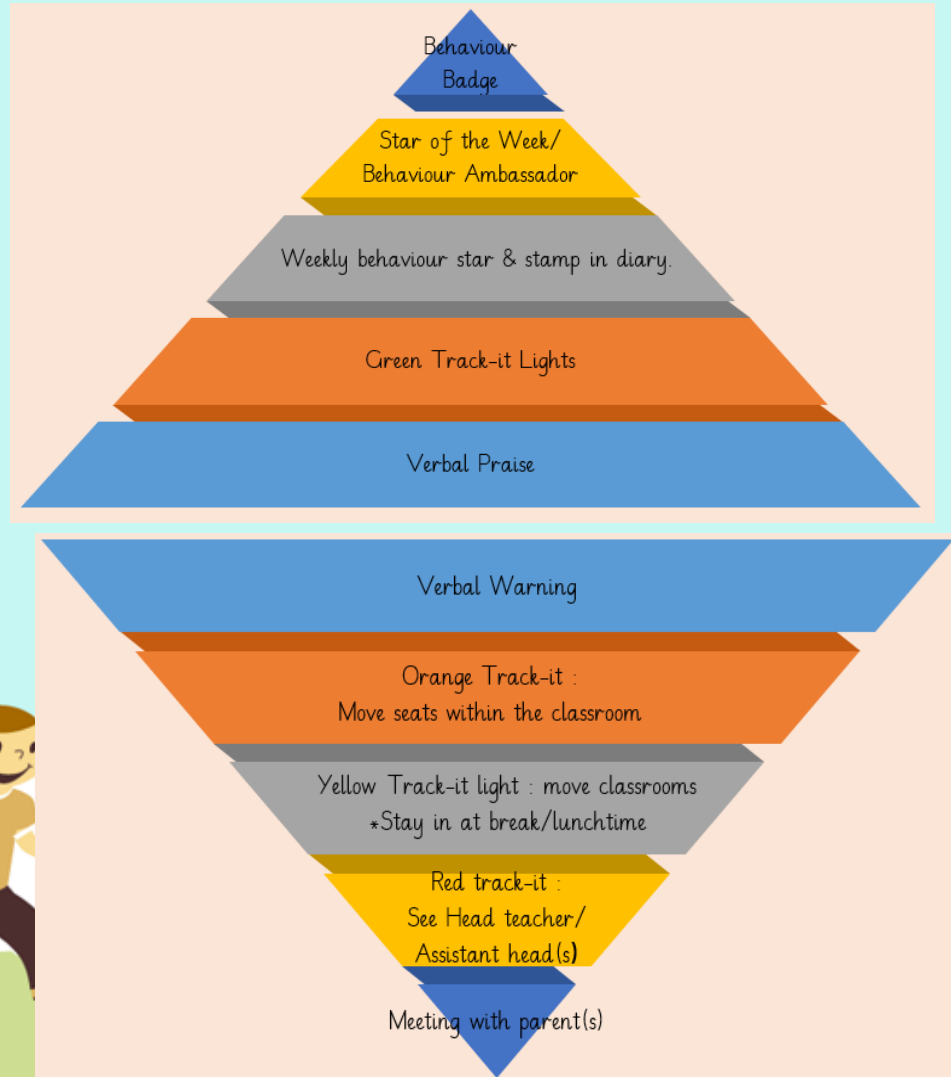


- Every Friday, the children are given the opportunity to reflect on their own behaviour and how well they have demonstrated our behaviour values and expectations – see next slides.
- If they feel they have done a good job with this, they are awarded a star sticker and a stamp in their communication diaries.
- Stars/shields are displayed in every classroom with the behaviour expectations around them.

Once the children had earned a certain number of stars, they first received their behaviour certificates and then today they will receive their Totally Trusted badge for maintaining their excellent behaviour.



Track – It Rewards/Sanctions



Children are given the opportunity to earn rewards for good behaviour through our Track-it Light system, based on the amount of points they earn.

There is also a clear behaviour pyramid that demonstrates the sanctions for demonstrating poor behaviour. Children are always given time to reflect on their poor behaviour if they are required to miss their break/lunch times.



Behaviour
Badge

Star of the Week/
Behaviour Ambassador

Weekly behaviour star & stamp in diary.

Green Track-it Lights

Verbal Praise



Verbal Warning

Orange Track-it :
Move seats within the classroom

Yellow Track-it light : move classrooms
*Stay in at break/lunchtime

Red track-it :
See Head teacher/
Assistant head(s)

Meeting with parent(s)



We will always show respect and celebrate the efforts of others.



We will always respect our school environment, making sure it is clean and tidy.



Mission Statement

At St. Bernadette's Catholic School, you will find us caring, hardworking and co-operative. We follow the ways of Jesus using our talents and gifts to make our school special. We show respect to all and welcome you.

We will always remember that we are all part of the St Bernadette's family.



We will always solve our differences with love and kindness.



We will always show good manners to everyone we meet in school.



We are always quiet and calm when moving around our school.



Mission Statement

At St. Bernadette's Catholic School, you will find us caring, hardworking and cooperative. We follow the ways of Jesus using our talents and gifts to make our school special. We show respect to all and welcome you.

We will always try our best in our work and never give up even when it is difficult.



We will always speak kindly and play considerately with others.



Confirmation

- All children take part in the programme of preparation through work completed in R.E. lessons.
- We are still waiting for the date to be confirmed, but it is usually during November/December.
- In order to be confirmed, children will need:
 - ✓ Their date of baptism.
 - ✓ The name of the church they were baptised.
 - ✓ To have made their First Holy Communion
 - ✓ To have selected a sponsor, who must be Catholic.



Residential Trips

Alton Castle

Teacher in charge

Mr Markham Jones

Date: 9th – 11th October

France

Teacher in Charge

Miss Lakin

Date: 3rd–7th June



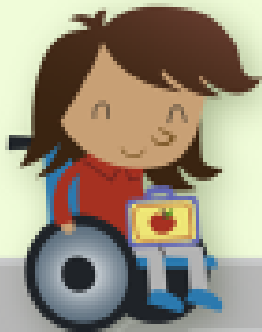
Special Educational Needs and Disabilities Coordinator

Miss Hulse is our new school SENDCo.

She works with children, teachers, parents and agencies to ensure that our pupils' needs are met.

Please visit our school website to find out what we can offer you, if you think your child has special educational needs.

If your child is on the SEND register, bookable appointments will be arranged this half term so please keep an eye on your emails.



How to speak to the SENDCo if you have a concern:

- We always encourage you to talk to your child's class teacher in the first instance
- Speak to a member of the office team to find out when the SENDCo may be available for an appointment
- You can also email her directly on SENDCO@stberns.bham.sch.uk or call her on 0121 783 7232 (option 3)
- We will hold review meetings with parents/carers during the school year so that you can find out how your child is doing in school





Secondary School Transfer

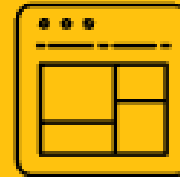


https://www.birmingham.gov.uk/info/20119/school_admissions/1778/secondary_school_year_7_admissions/

School admissions

This content is subject to regular updates.

Secondary school
(year 7)



Secondary School Transfer Information

- You can list up to six different secondary schools as preferences in your application. This can include schools outside of Birmingham.
- Birmingham City Council runs a co-ordinated admissions scheme with neighbouring local authorities.
- If you are applying for schools in another local authority then we recommend that you contact them for their admissions arrangements as this will help you to decide if your application is likely to be successful.
- Birmingham City Council will only deal with applications for school places if you live in Birmingham and pay council tax to the authority.
- If you live in Birmingham your application must still be made to Birmingham City Council, even if applying to schools outside of Birmingham.



Secondary School Transfer Information

- You must read the admission arrangements for the secondary schools you are interested in to see how likely it is that your child will be offered a place there.
- How close you live to a school is very important. Schools have cut-off distances which change each year based on demand.
- Schools may have open sessions or evenings that you can attend to have a look around the school or instead hold virtual events throughout September. Visit the schools' own website for further details.
- If your child has special educational needs or a disability (SEND) consider whether your chosen schools are suitable for their specific educational needs. Talk to school staff at the open days or evenings where they are taking place or contact them via other methods such as by phone or email.



Grammar Schools

- If your child will be sitting the selective test for entry to grammar schools, we strongly recommend that you do not submit your online application until you know the results of your child's grammar school test.
- The test results for grammar schools in Birmingham will be available before 31 October 2023.
- Once you have received your child's test score for the Grammar Schools in Birmingham, if you still want to apply for a grammar school, it is essential that you list it as one of your preferences in your online application. Make sure you also check the admission arrangements as most of The Grammar Schools in Birmingham still operate catchment areas.



Grammar Schools

- Do not lose the opportunity to list other school preferences before knowing the results from the selective test. We are aware that with grammar schools in other local authorities you may not receive your test scores after the closing date to apply for your preferences (31 October 2023). However, online applications must be submitted by 31 October 2023 to be classed as on time. Therefore, you must ensure that if you are applying for a grammar school in another local authority you include it as a preference on your application.
- If you apply after the final closing date of 31 October 2023 your application will be considered as a late application and will not be processed until after the offer of places on 1 March 2024. Late applicants are less likely to be offered a place at one of their preferred schools.



Applications

- Applications open on 1 September 2023 for secondary school applications for entry in September 2024. The closing date is 31 October 2023 at 11:59pm.
- You will receive email confirmation that you have submitted your application form. Check this to make sure everything is correct.
- You can amend your preferences right up to midnight on the closing date.



Transfer Process – Tips

- Refer to Birmingham City Council website for information on schools and the transfer process.
- Using the online application process, identify six *different* schools you would like your child to attend.
- Rank your six preferences in the order of schools you most prefer.
- Check the online booklet to make sure your child meets the entry criteria for the schools you prefer.
- Has your child satisfied the entry criteria for the *past 2 years?*



Transfer Process – Tips

- *Make sure that you choose at least one school where your child meets ALL entry requirements.*
- List your choices in order of preference (include grammar schools and schools in other authorities).
- Give the name and date of birth of any brother or sister who is already at a school you are applying to.
- Check how far you live from the schools you prefer (by straight line measurement in Km or m). Help can be obtained from Admissions and Appeals on 0121 303 1888.



Secondary School Transfer Information

- You must apply online. All relevant information, including the Secondary Education Booklet which outlines this process, is available from:
 - www.birmingham.gov.uk/schooladmissions
- If you do not have access to the internet, you can make an appointment to complete the form here.



Information to Note

- You must complete the form belonging to the local authority that you pay council tax to. List any schools (regardless of authority) on this form. The only exception to this is independent schools who must be contacted directly.
- You must only fill in one form.



Information to Note:

- If you live in Birmingham and list only one school as a preference, and your child cannot be offered a place at that school, then a place will be offered at an alternative school. This will be one of the nearest schools with a place available after offers have been made to all other applicants who applied on time. It is well worth listing more than one preference even if you are confident that your child will be offered a place at a certain school based on previous years' admission patterns. Due to demographic changes from year to year, there is no guarantee that a pattern will continue in future.



Thank you and please don't hesitate to come and speak to us if you have concerns or if we can help in any way.

THANK YOU FOR CONTINUING TO SUPPORT YOUR CHILD AND OUR SCHOOL.

